

FSU
RESEARCH

Research Committee
Fall Update 2024

Research by the numbers

Fiscal Year	Proposals	Awards	Expenditures	YoY Change
2022	\$730.3M	\$287.3M	\$356.4M	+8.6%
2023	\$873.6M	\$301.9M	\$414.4M	+16.3%
2024	\$1.087B	\$415.8M	~\$454M*	+9.6%



NATIONAL SCIENCE FOUNDATION
Highest funding in Florida

\$58.4M in 2022

\$75.4M in 2023

\$65.4M in 2024



NATIONAL INSTITUTES OF HEALTH
Area of focus for targeted growth

\$41.0M in 2022

\$45.5M in 2023

\$73.3M in 2024

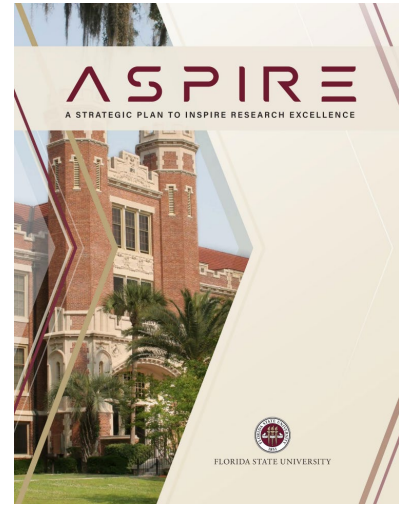
* Estimated total

ASPIRE

1. Our People
2. Partnerships and Innovation
3. Supporting Infrastructure
4. Focus on Scholarship and Excellence
5. Strategic Impact Areas

HEALTHY FLORIDA | ADVANCING MATERIALS | A RESILIENT FUTURE

SMART DATA | HUMAN IMPACT



FSU

Strategic Recruitments

- Constellations rather than clusters
- Focus on strategic impact areas
- Compliment our current faculty and strengths
- Aggressive plan



FSU

INSPIRE

Institute for Strategic Partnerships, Innovation,
Research, and Education

Supported by a \$98.4M Award from TGC, Inc.

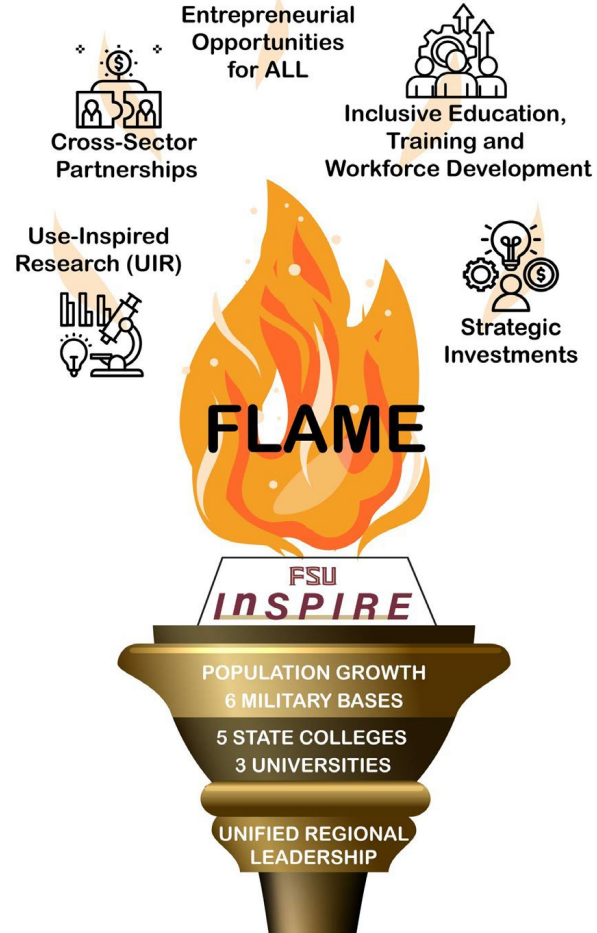


Recruitment underway

- Key Hires
 - Senior Administrator
 - Tiffany Pelletier – July 2024
 - Senior Project Research Engineer - Aerospace
 - Chase Foster – September 9, 2024
 - Senior Project Research Engineer – Advanced Manufacturing & Materials
 - Dr. Abdalla Nasser – September 15, 2024
 - Director of Communications and Marketing
 - Linda Morgan – September 6, 2024
 - Director of Community Engagement
 - Grey Dodge – November 1, 2024
 - Executive Director
 - Search underway

Florida Advanced Manufacturing Engine (FLAME)

- Preproposal submitted August 6, 2024
- Invited to compete for \$160M (October 24, 2024)!!!
- Full proposal due February 11, 2025





TRANSLATIONAL INFRASTRUCTURE

- **Restructure and Align resources to support translational research and outcomes**
 - AVP and 75% positions identified filled
- **Optimize agreement templates/policies to better support partnerships**
 - Standardized license, option, startup, and NDA templates complete and deployed
- **Develop co-location space for private sector partners**
 - Transition of Leon County 40,000 sq ft mixed lab building to FSU underway for incubator program
 - Client space licenses done, rates approved by EDA
 - Interdisciplinary Research & Commercialization Building comes online 2025

PATHWAYS TO IMPACT

- **Idea Ignition Program Established**
 - Seeking 3-5 \$10-15k seed funding for translational research projects
- **Launch Two New Translational Research Projects**
 - Two projects ongoing, process in development for second cohort
- **New Innovation Ecosystem Partnerships Established**
 - Innovation ecosystem engagement through IGNITE incubator
 - Partnerships with Alliance of Entrepreneur Resource Organizations (AERO), Jim Moran Institute, Tallahassee Chamber of Commerce, and Leon County Research and Development Authority

EDUCATION AND TRAINING

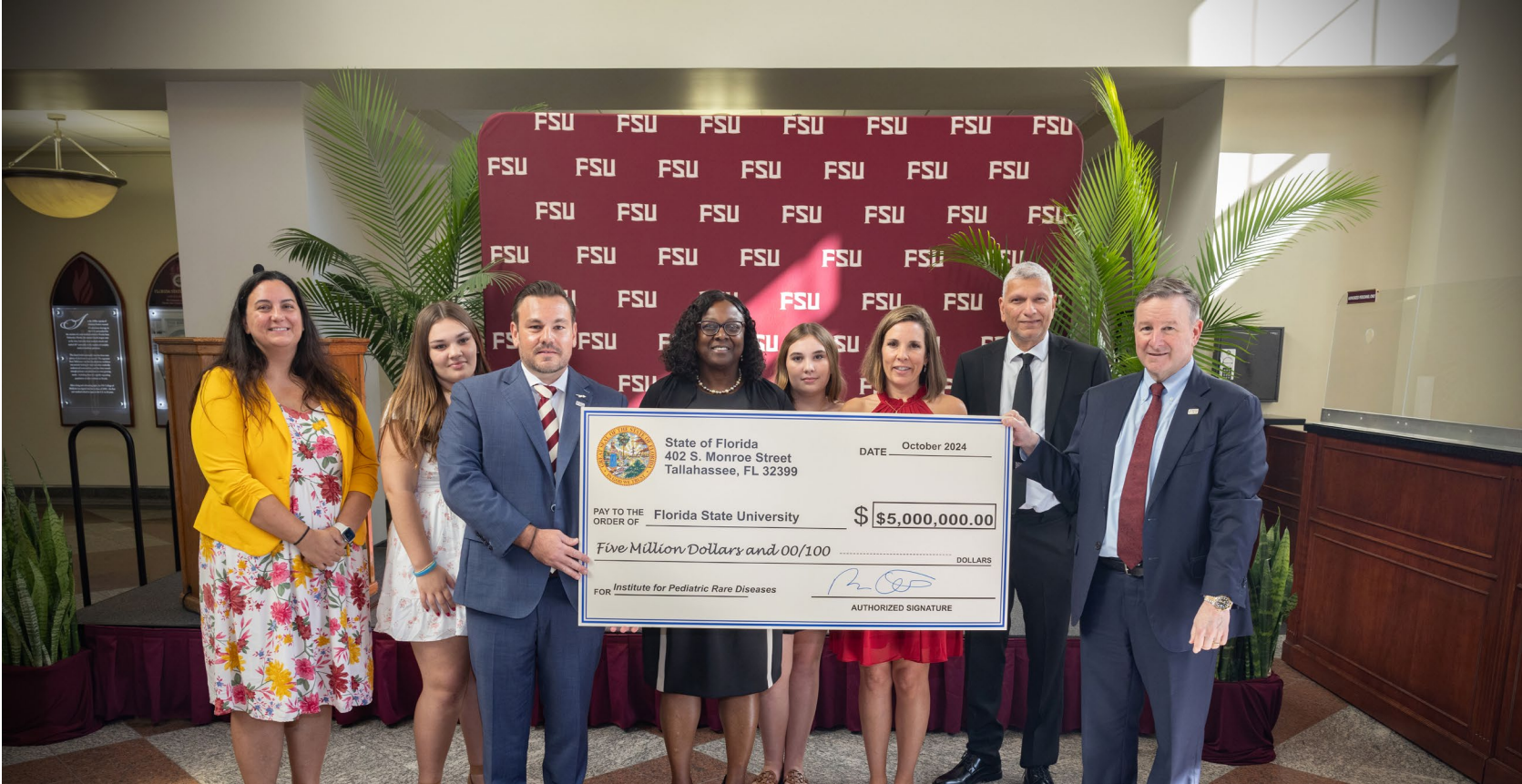
- **Design/maintain the IGNITE-FSU Badge for Translational Research**
- **Establish a Translational Fellows Program/Recruit Postdocs**
 - IGNITE Faculty Fellow recruited, badge course in progress
- **Create a Translational Research Mentorship Program**
 - Mentor process established and recruiting mentors.
 - Identified mentorship system and onboarding in progress.
 - Translational mentorship matches in progress.
- **SBIR/STTR Training Provided in collaboration with FAMU**
 - Fall and spring 2024 SBIR training provided to 59 participants
 - Additional programming in planning.
- **Commercialization Internship program**
 - Defined and recruiting

CULTURE OF INNOVATION

- **ART Ambassador Network Established at FSU**
 - ART Ambassador Network target start December 2024
 - ARTISAN student network coordination underway
- **Launch "Innovation is Everywhere" campaign**
 - Expo during Discovery Days, 7 startups and 4 student startups showcasing
- **Host Regional Innovation Week with at least 15 events that celebrate translational research and connect the community**
 - Discovery Days scheduled Oct 7-12 with over 20+ events
- **Aligning Institutional Policies and Promotion Practices**
 - Institutional IP regulation edits under review
 - Rich Carter, Oregon State to visit and talk on tenure/Promotion, target Jan/Feb visit
- **Ensuring broad and diverse participation in IGNITE-FSU**
 - Aligned metrics for incubator, broaden diverse participation



DISCOVERY DAYS
FSU RESEARCH, CREATIVITY, AND DISCOVERY



COLLABORATIVE COLLISION

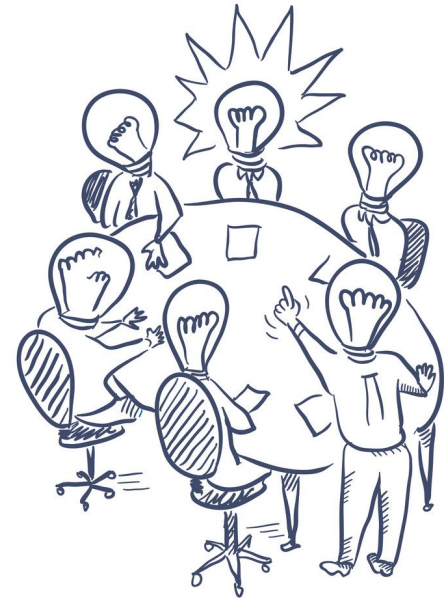


Digital Health

November 12

11:00am – 1:00pm

Miller Hall (in the Stadium)



**RESEARCH
INTEREST
GROUPS (RIG)**

FSU Health – Tallahassee



Quality Care



3D View

Education



Research



Connections





FSU WELCOMES

Dr. Phillip Worts

Director of Health
Research Connect

FSU

Questions?